

# ANDOVER



FARMHOUSE



TRANSITIONAL



CRAFTSMAN



TRADITIONAL

PRESCOTT PARK

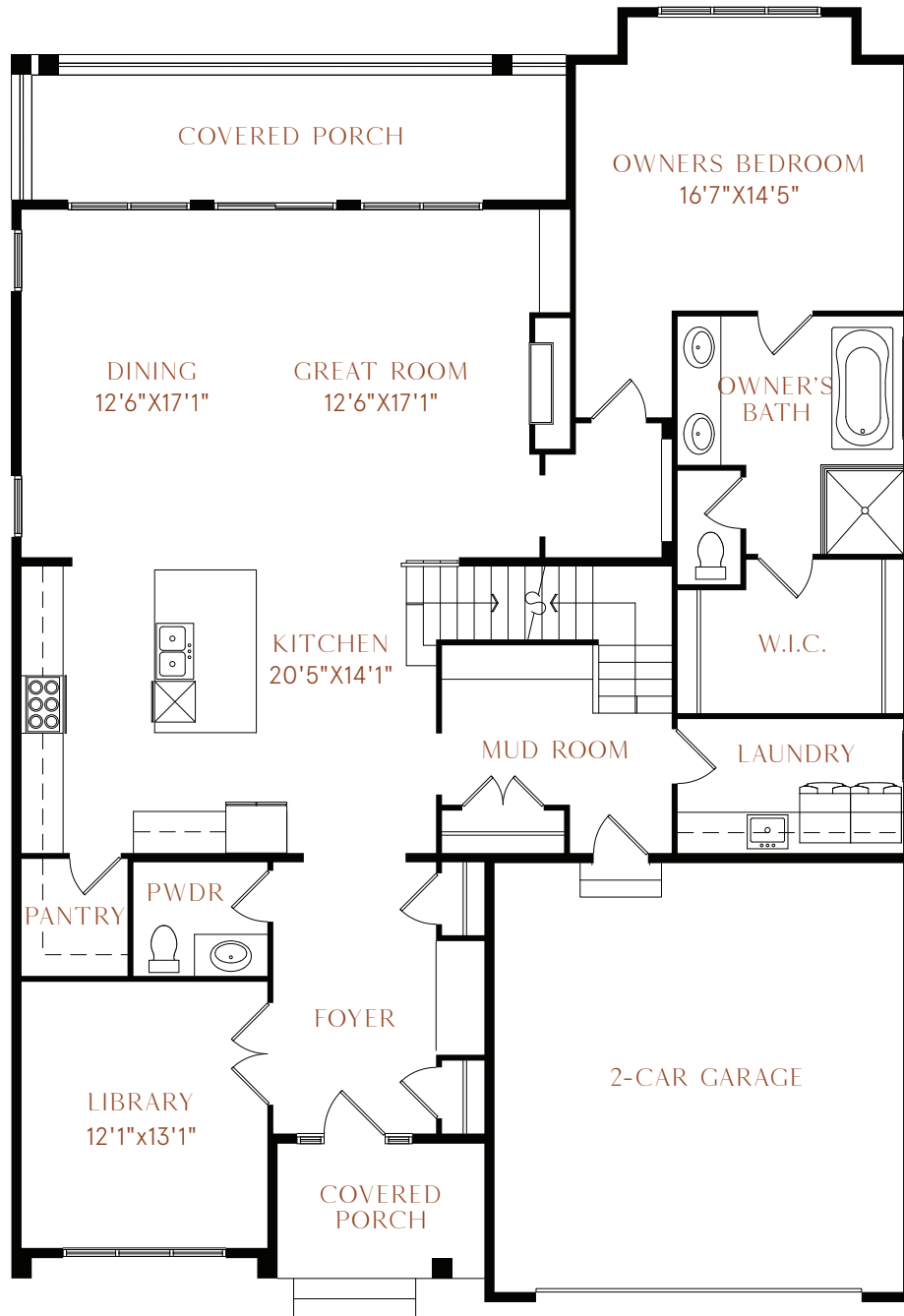
248-633-8133 [www.prescottparkhomes.com](http://www.prescottparkhomes.com) [www.hunterpasteur.com](http://www.hunterpasteur.com)

Renderings are artist conceptions that may not be to exact scale and are not intended to show specific detailing. We reserve the right to make changes to prices, specifications, and materials without prior notice or obligation. Features/amenities shown are based upon current development plans that are subject to change.

# ANDOVER

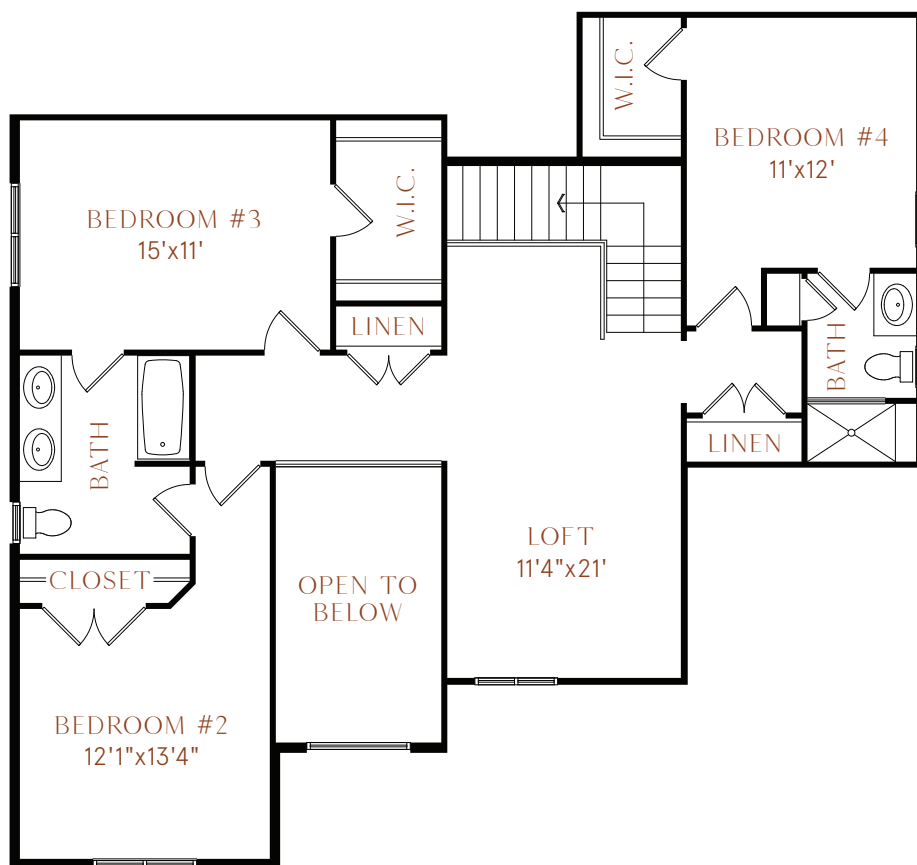
- 3,196 Int. Sq. Ft.
- 3 Full Bathrooms, 1 Half
- 4 Bedrooms, Library, Loft
- Step ceiling in select areas
- Optional Basement with Full Bath
- 2 Covered Porches
- 2-Car Attached Garage

## FIRST FLOOR



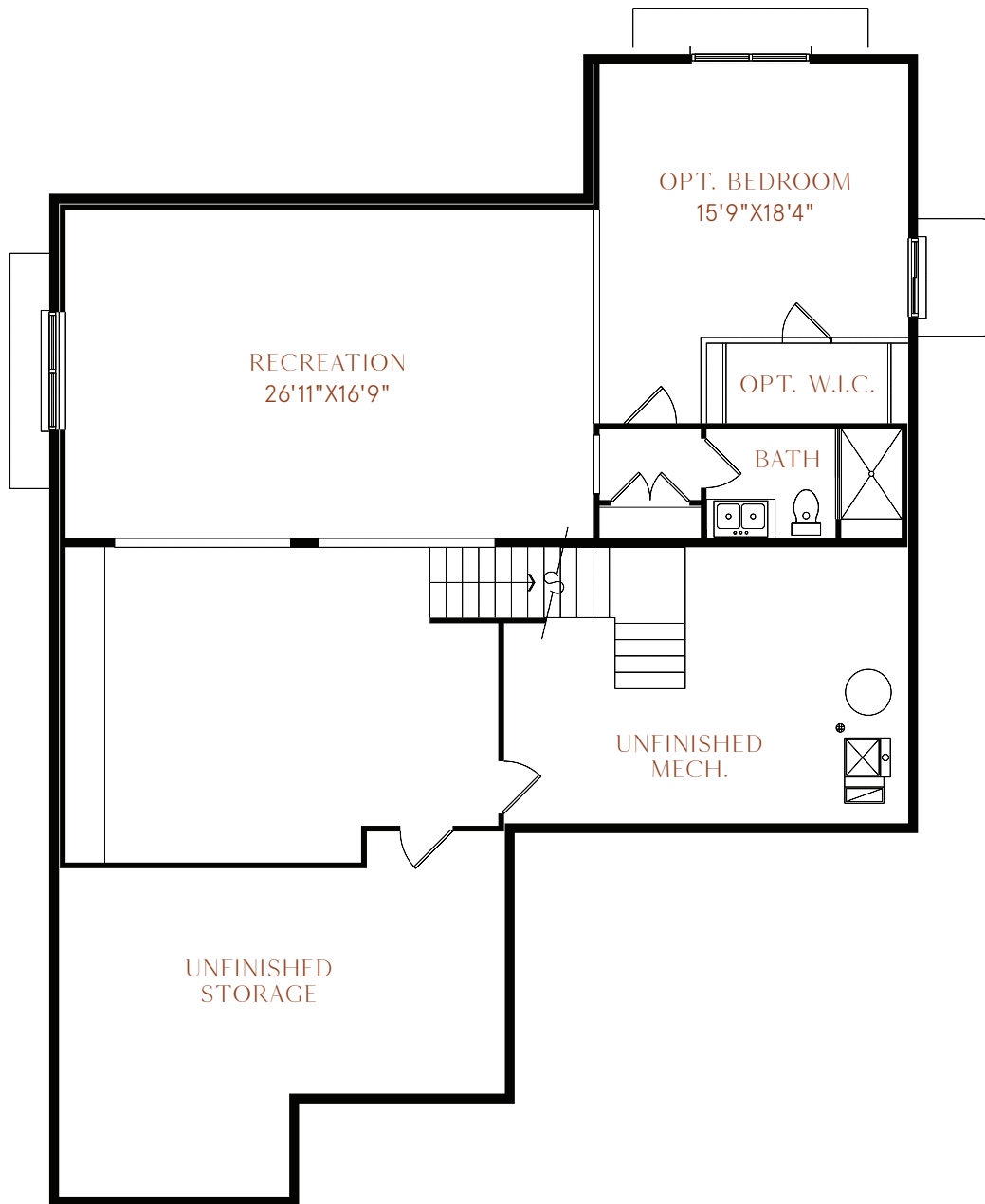
# ANDOVER

## SECOND FLOOR



# ANDOVER

## OPT. BASEMENT (1,277 sq. ft)



248-633-8133 [www.prescottparkhomes.com](http://www.prescottparkhomes.com) [www.hunterpasteur.com](http://www.hunterpasteur.com)

Renderings are artist conceptions that may not be to exact scale and are not intended to show specific detailing. We reserve the right to make changes to prices, specifications, and materials without prior notice or obligation. Features/amenities shown are based upon current development plans that are subject to change.

# PRESCOTT PARK